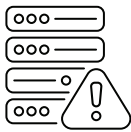


# NetQuest NetworkLens™

## Hyperscale Network Intelligence for AI-Driven Cyber Threat Detection

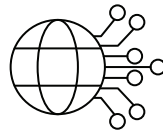
Structured network datasets engineered for modern analytics, AI agents, machine learning, and national security operations.

### The Cyber Defense Challenge



#### Legacy Telemetry Limits

Traditional logs and flows lack AI-ready context



#### Complex Infrastructure

Massive, hybrid, carrier-grade networks generate enormous traffic volumes



#### Advanced Threats

Modern attacks hide within encrypted traffic and common management protocols

### The NetworkLens Solution

NetQuest NetworkLens is a portfolio of enriched network intelligence datasets generated by the Streaming Network Sensor (SNS) platform. It delivers structured, context-rich metadata that enables hyperscale analytics, AI-driven threat hunting, and advanced behavioral detection. Built for modern cyber defense environments, NetworkLens transforms live network traffic into high-fidelity intelligence that supports rapid analysis, automated detection, and mission-critical visibility across complex infrastructures.

#### Key Capabilities

- Hyperscale real-time intelligence
- Encrypted traffic analysis
- AI-ready metadata
- Full-stack visibility
- Pipeline-ready data

Live Network Traffic

Streaming Network  
Sensor (SNS)

NetworkLens  
Intelligence Datasets

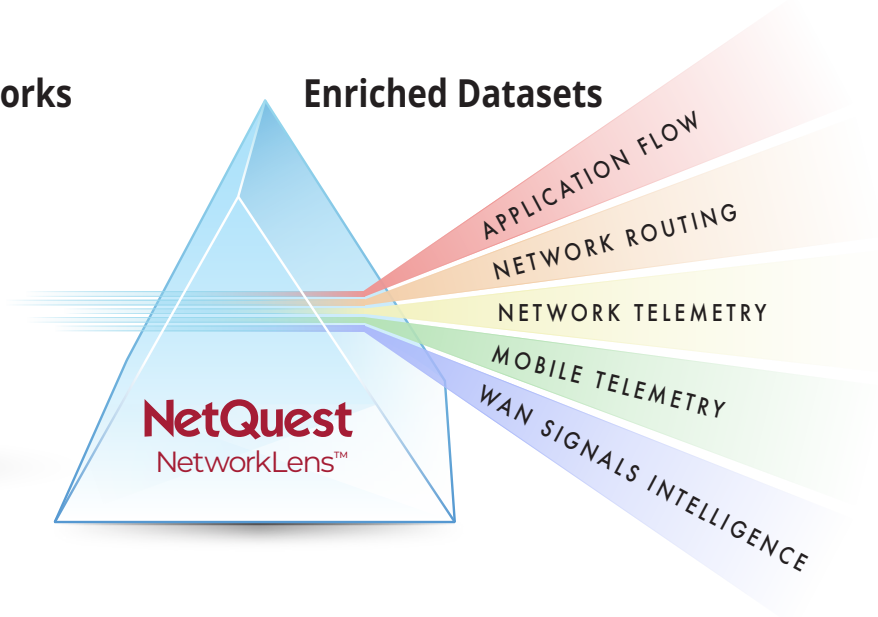
AI / Threat Hunting /  
Analytics

# Intelligence Across the Entire Network Stack

## Global Hyperscale Networks



## Enriched Datasets



## Designed for Hyperscale Cyber Defense



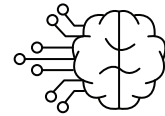
### Telecom Security Operations

Structured visibility across carrier-grade infrastructure to proactively detect anomalies, botnets, and emerging threats.



### Defense & Intelligence Agencies

High-fidelity network intelligence designed to support national security missions, situational awareness, and advanced cyber defense.



### AI-Driven Threat Hunting Teams

Rich behavioral datasets that power encrypted traffic analysis, AI model training, and autonomous investigations.

CONTEXTUAL  
NETWORK  
INSIGHTS

FLEXIBLE  
STREAMING  
DATASETS

AI-READY  
INTELLIGENCE

HYPERSCALE  
ANALYTICS

## Learn More / Contact Us

[info@netquestcorp.com](mailto:info@netquestcorp.com)

[www.netquestcorp.com](http://www.netquestcorp.com)

+1 (856) 866-0500

See how NetworkLens delivers real-time, AI-ready network intelligence for hyperscale cyber defense environments.

© 2026 NetQuest Corporation. All rights reserved.

NetQuest and the SNS Series are trademarks of NetQuest Corporation.